

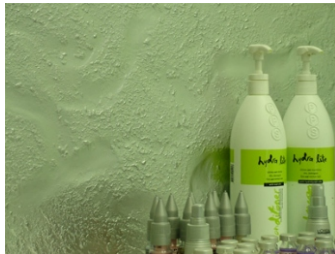
### Can I use KLASS as a splash back?

**Yes!**

KLASS can easily provide a very individual look to your kitchen or laundry as a splashback.

Select any of the 15 standard textures in green tint for a classic slumped glass look, or choose a metallic paint finish to compliment or contrast other colours and finishes in the room.

Remember, as with any building product you need to ensure the applicable building code guidelines are followed.



4 Commercial Road,  
Kingsgrove NSW Australia 2208  
Phone: +61 2 9502 1200  
Fax: +61 2 9150 7446  
Email: info@klass.com.au