

### Can KLASS be drilled?

#### Yes!

Being an acrylic product KLASS can be drilled with most types of drills, whether battery or electric.

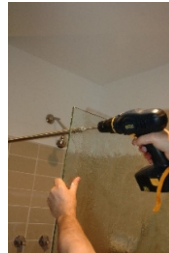
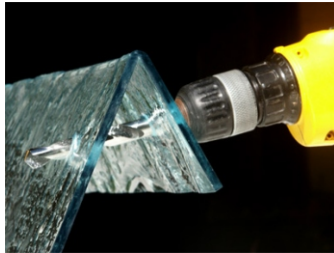
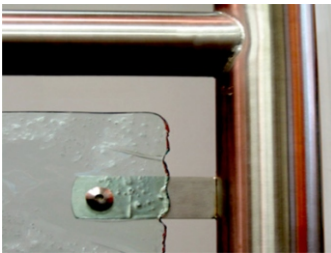
It is recommended that blunt drill bits (wood) be used at a low speed. If only new bits are available, then drill slowly with little pressure at low speed.

Sharp bits can 'catch' the acrylic and a split may result.

(Be mindful that using any type of this equipment can be dangerous, we recommend that only people whom have skills with this type of equipment attempt to drill, cut or fabricate KLASS.

All personal protective equipment must be used and a safety assessment should be completed.)

KLASS offers drilling, polishing and cut to size services for your safety and convenience.



4 Commercial Road,  
Kingsgrove NSW Australia 2208  
Phone: +61 2 9502 1200  
Fax: +61 2 9150 7446  
Email: [info@klass.com.au](mailto:info@klass.com.au)